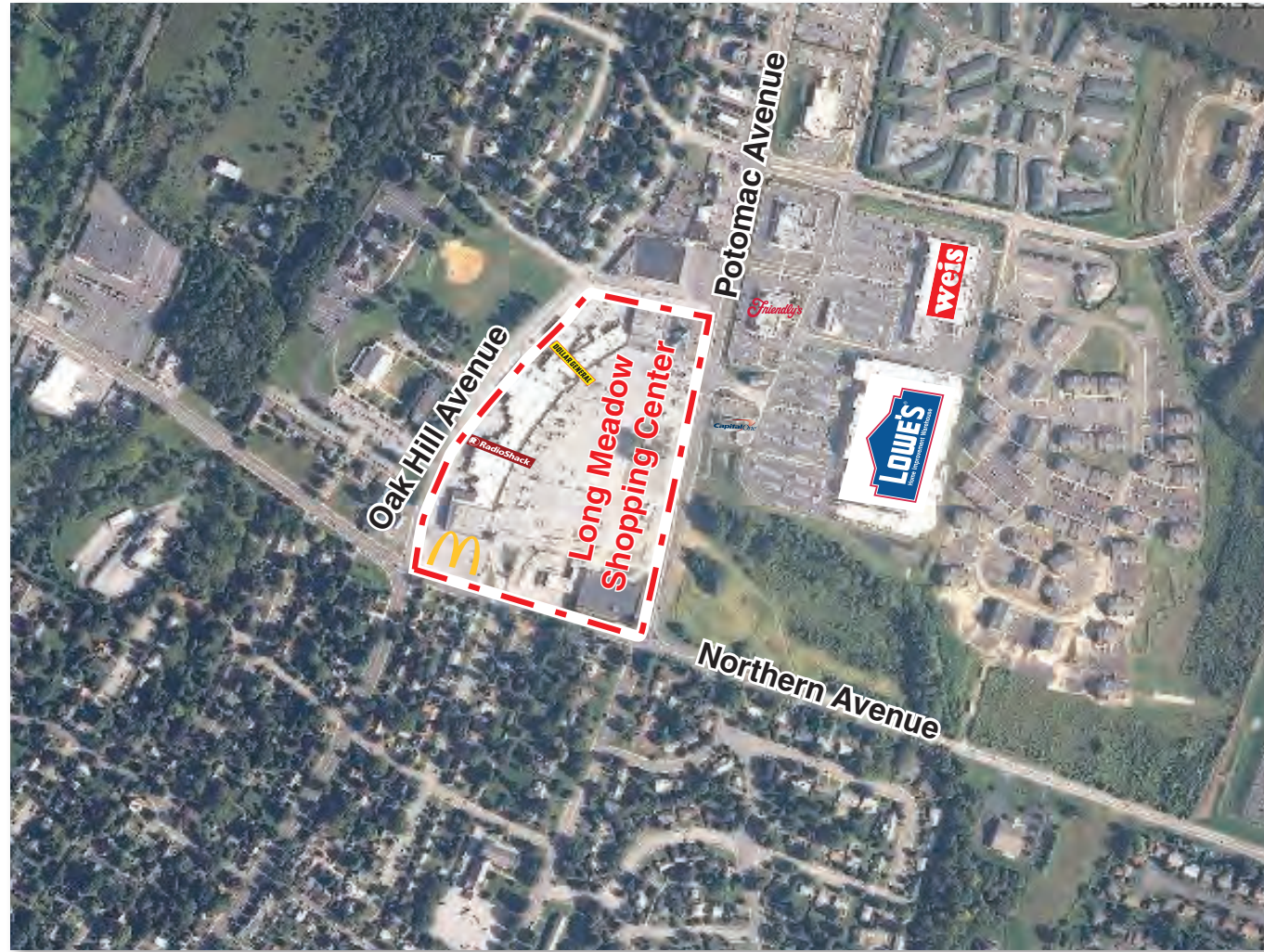


# Long Meadow Shopping Center Hagerstown, MD 21742

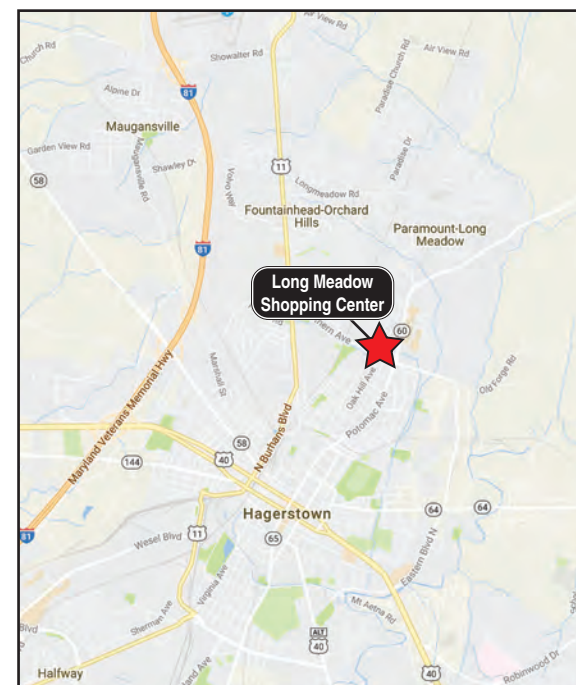


# RD MANAGEMENT LLC

# Hagerstown, MD Long Meadow Shopping Center



Demographics	3 mile	5 mile	10 mile
<b>Population</b>			
2020 (projection)	53,236	84,827	161,579
2015 (estimate)	52,446	83,626	159,575
2010 (census)	50,142	80,916	155,681
<b>Number of HH</b>			
2020 (projection)	22,375	35,737	64,077
2015 (estimate)	21,744	34,753	62,228
2010 (census)	20,335	32,925	59,376
<b>Average HH Income</b>			
2020 (projection)	\$61,367	\$64,377	\$70,000
2015 (estimate)	\$58,049	\$60,849	\$66,176
2010 (census)	\$56,914	\$61,136	\$64,789
<b>Median Age</b>			
2015 (estimate)	37.0	38.0	38.8



**Location:**

Long Meadow Shopping Center is located in Washington County at 1545 Potomac Avenue (Route 60) and Northern Avenue in Hagerstown, MD 21742.

**Type:**

Community Power Center

**GLA:**

164,293 square feet

**Parking:**

1,000 cars

**Traffic:**

Two way average daily traffic 14,950 cars per day

**Major Tenants:**

Pennsylvania Dutch Market	20,000 square feet
CVS	13,225 square feet
Dollar General	9,987 square feet
McDonald's	3,904 square feet

**Availability:**

- Redevelopment opportunity for future anchor tenants
- Across from new Shopping Center with Lowe's and Weis Markets
- High growth area

RD Management LLC  
**Bradley M. Schwartz**  
 212-265-6600 x298  
[bschwartz@rdmanagement.com](mailto:bschwartz@rdmanagement.com)

810 Seventh Avenue, 10th floor  
 New York, NY 10019

**RD Management LLC is ranked one of the Top 100 Retail Real Estate Owners in the U.S.**

Information furnished is from sources deemed reliable, but is not guaranteed by RD Management and is subject to change in price, corrections, errors and omissions, prior sales or withdrawal without notice.

# Long Meadow Shopping Center

Potomac Avenue (Route 60) and Northern Avenue  
Hagerstown, Maryland 21742



**Bradley M. Schwartz**  
212-265-6600 x298  
bschwartz@rdmanagement.com  
810 Seventh Avenue, 10th floor  
New York, NY 10019



<b>A. Future Renovation</b>	
<b>Ground Floor Retail (226'-7.5" x 150'-7")</b>	<b>23,257 sf</b>
<b>Second Floor Office (226'-7.5" x 150'-7")</b>	<b>30,153 sf</b>
<b>B. Available (137' x 180' irr.)</b>	<b>24,395 sf</b>
<b>C. Available (75' x 160')</b>	<b>12,000 sf</b>
<b>D. Available (100' x 180' irr.)</b>	<b>24,000 sf</b>
<b>E. Pennsylvania Dutch Market</b>	<b>20,000 sf</b>
1. Ben's Flower Shop	2,000 sf
2. Long Meadow Cleaners	2,100 sf
3. Taste of Europe	2,100 sf
4. Long Meadow Liquors	7,400 sf
5. <b>Available (37.6' x 125')</b>	<b>4,706 sf</b>
6. <b>Available (28.8' x 100')</b>	<b>2,880 sf</b>
7. Zoo Zoo Animal Land	3,362 sf
8. <b>Available (20' x 100')</b>	<b>2,000 sf</b>
9. China Wok	2,840 sf
10. <b>Available (40' x 150')</b>	<b>6,000 sf</b>
11. Longmeadow Eye Care	3,798 sf
12. Port City Java	1,860 sf
13. Weyira Olive Oil	800 sf
14. Long Meadow Barber Shop	800 sf
15. Northside Pizzeria	1,954 sf
16. Nail Palace	1,440 sf
17. <b>Available (50' x 109' irr.)</b>	<b>5,430 sf</b>
18. <b>Available (18' x 109')</b>	<b>1,976 sf</b>
19. Shear Image Hair Salon	1,440 sf
20. Dollar General	9,987 sf
21. CNB Bank	2,500 sf
22. CVS	13,225 sf
23. The Columbia Bank	2,500 sf
24. McDonald's	3,904 sf

**Future Pad Building Renovations:  
Ground Floor Retail with Second Floor Offices**

